

Key Investor Information

This document provides you with key investor information about this fund. It is not marketing material. The information is required by law to help you understand the nature and the risks of investing in this fund. You are advised to read it so you can make an informed decision about whether to invest.

VT Momentum Diversified Balanced (the "Fund")

a sub-fund of VT Momentum Investment Funds (the "Company")

Class A Accumulation Shares (ISIN: GB00B7W1TW44)

The authorised corporate director of the Fund is Valu-Trac Investment Management Limited

Objectives and Investment Policy

The Fund aims to achieve total returns (comprised of capital growth and income) of the Consumer Prices Index + 4% (net of management fees and underlying fund charges) over the medium to long-term (3-5 years). Capital is in fact at risk and there is no guarantee that a positive return will be achieved over a five year, or any, period.

The Fund may gain exposure to a broad range of asset classes, including global equities, UK equities, corporate and government bonds, money market instruments, cash and near cash by investing at least 50% in a globally diverse mix of collective investment vehicles (including investment trusts) (which may include those managed and/or operated by the ACD or Investment Manager).

The risk profile of the Fund is broadly balanced with between 40% and 60% exposure to equities.

The Fund may also invest in cash, near cash, deposits, money market instruments and money market funds.

The Fund may use derivatives or forward transactions only for the purpose of efficient portfolio management. The Fund may use derivatives (that is sophisticated investment instruments linked to the rise and fall of the price of one or more underlying assets) or forward transactions only for the purpose of efficient portfolio management.

The Fund is actively managed.

Save as noted above, the Fund will not have any particular geographic, industry or economic sector focus and as such weightings in these may vary as required.

You can buy and sell shares in the Fund on any business day. Income from the Fund will be added to the value of your investment (i.e. dividend income will be included in the value of your shares).

For full investment objectives and policy details please refer to the prospectus.

Risk and Reward Profile

The Risk and Reward Indicator table demonstrates where the Fund ranks in terms of its potential risk and reward. The higher the rank the greater the potential reward but the greater the risk of losing money. It is based on past data, may change over time and may not be a reliable indication of the future risk profile of the Fund. The shaded area of the table below shows where the Fund ranks in terms of its potential risk and reward based on historical data.

| Lower Risk | | | Higher Risk | | | |
|-------------------------|---|---|--------------------------|---|---|---|
| Typically lower rewards | | | Typically higher rewards | | | |
| 1 | 2 | 3 | 4 | 5 | 6 | 7 |

Historical data may not be a reliable indicator of the Fund's future risk profile. The risk category shown is not guaranteed and may change over time. The lowest category does not mean "risk free".

The Fund is ranked 4 because weekly historical performance data indicates that average rises and falls in market prices would have occurred historically.

The following risks are material in addition to the risks captured by the indicator above:

- **Counterparty risk:** The Fund can conclude various transactions with contractual partners. If a contractual partner becomes insolvent, it can no longer or can only partly settle unpaid debts owed to the Fund.
- **Market Risk:** External factors can cause an entire asset class to decline in value which would result in a decrease in the value of investments.
- **Currency Risk:** As the Fund may invest in overseas securities, movements in exchange rates may, when not hedged, cause the value of your investment to increase or decrease.
- **Liquidity Risk:** adverse market conditions may affect the ability to sell certain assets when necessary. Reduced liquidity may have a negative impact on the price of assets.
- **Bond value risk:** The Fund has exposure to bonds, the prices of which will be impacted by factors including; changes in interest rates, inflation expectations and perceived credit quality. When interest rates rise, bond values generally fall. This risk is generally greater for longer term bonds and for bonds with higher credit quality.

For full details of the Fund's risks, please see the prospectus which may be obtained from the address in 'Practical Information' overleaf.

Charges

The charges you pay are used to pay the costs of running the Fund, including marketing and distributing costs. These charges reduce the potential growth of your investment.

| One-off charges taken before or after you invest | |
|---|-------|
| Entry Charge | 0.00% |
| Exit Charge | None |
| Charges taken from the fund over a year | |
| Ongoing Charges | 1.52% |
| Charges taken from the fund under specific conditions | |
| Performance Fee | N/A |

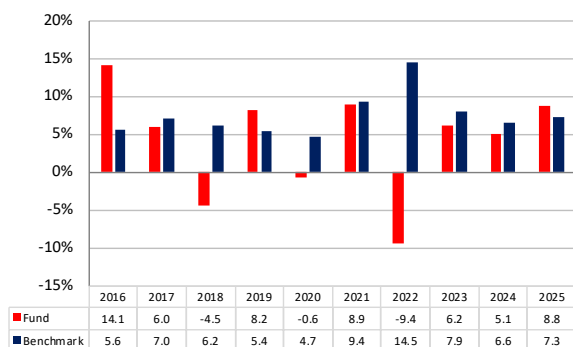
This is the maximum that might be taken out of your money before it is invested or before the proceeds of your investment are paid out. In some cases you may pay less and you should speak to your financial advisor about this.

The ongoing charges figure is based on expenses and the net asset value as at 31 December 2025. This figure may vary from year to year. It excludes portfolio transaction costs. The Funds annual report for each financial year will include detail on the exact charges made.

You may also be charged a dilution levy on entry to or exit from the Fund, this is to cover costs associated with your transaction.

For more information about charges, please see the prospectus which may be obtained free of charge from the address in 'Practical Information' below. The Funds annual report for each financial year will include detail on the exact charges made.

Past Performance



Past performance is not a guide to future performance.

The past performance in the chart shown opposite is inclusive of tax and charges but excludes the entry charge that may be paid on the purchase of an investment.

The Fund and share class were launched on 5 November 2012.

Performance is calculated in pounds sterling.

Benchmark: UK Consumer Price Index + 4%

On 28 May 2021 the Fund changed its name from MI Momentum Focus 4 to VT Momentum Diversified Balanced. Past performance prior to 28 May 2021 was achieved under the Fund's former name.

Practical Information

The depositary for the Fund is NatWest Trustee and Depositary Services Limited.

You can obtain further information about the Fund, copies of the prospectus, annual reports and accounts and half-yearly reports and accounts in English, free of charge, from Valu-Trac Investment Management Limited, Main of Orton, Moray, IV32 7QE. They are also available electronically at www.valu-trac.com.

The Fund's latest published price and other information is available at www.valu-trac.com and can also be obtained during normal business hours by calling 0330 678 4760 or by emailing investorservices@valu-trac.com.

The Fund is a sub-fund of the Company. The Prospectus and annual or half yearly reports and accounts contain information about the Company and all of its sub-funds.

Each of the sub-funds of the Company is segregated by law. This means that the assets of this Fund may not be used to pay the liabilities of other sub-funds of the Company.

Shares in other classes may be available. Details are set out in the Prospectus. It may be possible to switch your investment at any time for shares in other classes within the Fund or for shares in a class within a different sub-fund. For further information on switching please contact Valu-Trac Investment Management Limited Investor Services by calling 0330 678 4760 or by emailing investorservices@valu-trac.com.

United Kingdom tax legislation may have an impact upon your own personal tax position. You are advised to seek professional advice on the tax treatment of your investment in the Fund.

Details of the up to date remuneration policy of Valu-Trac Investment Management Limited which includes a description of how remuneration and benefits are calculated and the identities of the persons responsible for awarding remuneration and benefits, is available at www.valutrac.com and a paper copy is available free of charge upon request.

Valu-Trac Investment Management Limited may be held liable solely on the basis of any statement contained in this document that is misleading, inaccurate or inconsistent with the relevant parts of the prospectus for the Company. The Fund is authorised in the United Kingdom and regulated by the Financial Conduct Authority.

Valu-Trac Investment Management Limited is authorised in the United Kingdom and regulated by the Financial Conduct Authority.

This key investor information is accurate as at 31/12/2025.